

DEWALT®

CATALOG

DROPPED OBJECT PREVENTION
PRODUCTS



GUARANTEED TOUGH.®

SERIOUS SAFETY

INDEX

DEWALT®

THE NEED FOR DROPPED OBJECT PREVENTION SAFETY PRODUCTS

Whether you're up on a roof, building a skyscraper or on a scaffolding or ladder, you need to have confidence in your safety equipment to keep you and others safe and sound. DEWALT® Dropped Objects Prevention products are easy to use and are built for the toughest work environments so you know you can concentrate on the job without other worries.

THE NEED FOR DROPPED OBJECTS PREVENTION

Page 3

ATTACHMENT POINTS

Page 5-7

TOOL LANYARDS

Page 8-11

POWER TOOL LANYARDS

Page 12-13

ANCHORS & HOLDERS

Page 14-15

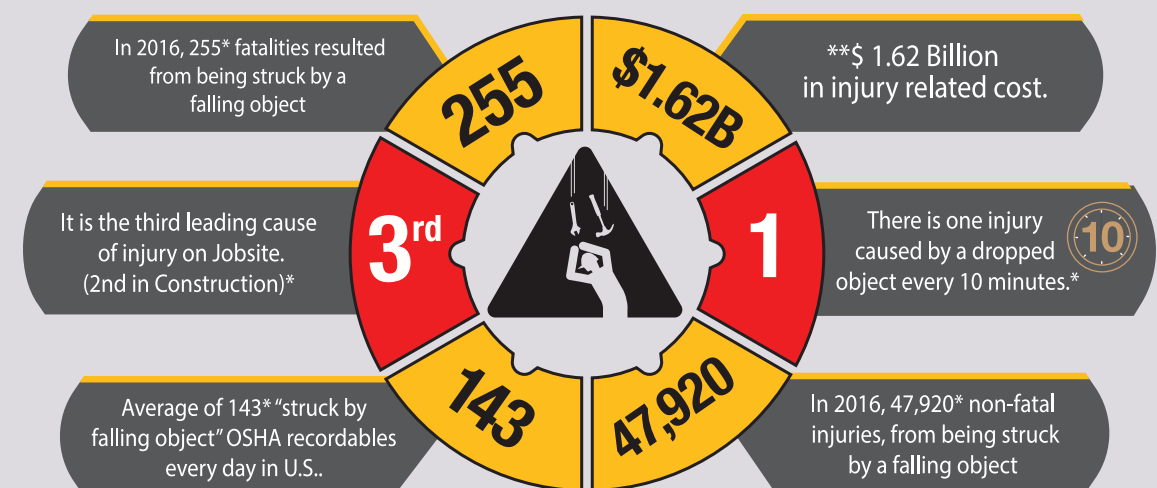
TOOL TETHERING KITS

Page 16-17

FALLING OBJECTS DATA

Page 18

DROPPED OBJECTS INJURY-FATALITIES-COST DATA



* Bureau of Labor Statistic ** Liberty Mutual Published 04/16/20

THE COMPLETE SYSTEM



ANCHOR
POINT
TOOL
ATTACHMENT
TOOL
LANYARD

Drop Prevention System - In order to protect workers from injury and equipment from damage it is essential to select all components of a drop prevention system to securely attach tools and prevent accidental drops. The three main components of a system are attachment points, connectors such as tool lanyards, and anchorage points.



Tool attachment points - Attachment points are a secure point on the tool that must be rated for at least the total weight of the tool. The user must select an attachment point that is appropriate for the tool and then secure it per the attachment instructions. Once the attachment point is in place the tool is considered "lanyard ready" and the connector or lanyard can be attached



Connectors - All tools are required to be tethered or connected to an anchorage so that so that they remain attached and protected from a fall in the event of a drop. Selecting the appropriate connector or tool lanyard based upon each tool's weight and configuration is essential to drop prevention.



Anchorage - The final component of the system is anchorages and holders. The key variable in selecting the appropriate anchorage is the weight. Tools weighing 5 lbs. (2.3 kg) or less may be attached to the body. This can be done by securing the connector end to anchors like a tool holder, wristband or a secure point on the user's tool belt or harness. For all tools greater than 5 lbs. (2.3kg) the user must secure the connector end to an anchorage point rated for at least the weight of the tool.

ATTACHMENT POINTS

For the tool lanyard to be connected to the tool we need to create an attachment point. The attachment point will be secured to the tool in one of three ways.

If the tool has an existing opening, you can use a couple of different attachment options. Either use an attachment with a cinch loop or one with a locking gate that can be passed through the tool hole for connection. (Fig A)

If there is not an existing opening the attachment point can be secured to the tool using the DEWALT Tool Tape. (Fig B)

In some cases the attachment point may be cinched onto the tool and then taped. (Fig C)



V-RING TOOL ATTACHMENT

DXDP710200

- Used to create a secure attachment point on most tools without a lanyard hole.
- Cinch design allows user to quickly secure equipment
- Secure in place using our Tool Tape
- Coated alloy steel V-Ring attachment point
- Length 12.5" (31 cm)
- Max capacity 35 lbs (15.8 Kg)
- Meets ANSI/ISEA 121-2018 Standard



V-RING TOOL ATTACHMENT (SINGLE WING)

DXDP710201

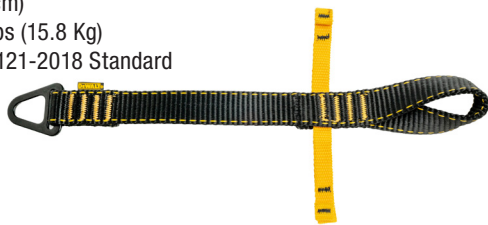
- Used to create a secure attachment point on most tools without a lanyard hole.
- Cinch design allows user to quickly secure equipment
- Stabilization wing can be used to secure cinch in place using our Tool Tape
- Coated alloy steel V-Ring attachment point
- Length 12.5" (31 cm)
- Max capacity 35 lbs (15.8 Kg)
- Meets ANSI/ISEA 121-2018 Standard



V-RING TOOL ATTACHMENT (DOUBLE WING)

DXDP710221

- Used to create a secure attachment point on most tools without a lanyard hole
- Cinch design allows user to quickly secure equipment
- Two Stabilization wings can be used to secure cinch in place using our Tool Tape
- Coated alloy steel V-Ring attachment point
- Length 12.5" (31 cm)
- Max capacity 35 lbs (15.8 Kg)
- Meets ANSI/ISEA 121-2018 Standard



V-RING TOOL ATTACHMENT (DOUBLE WING)

DXDP710222

- Used to create a secure attachment point on most tools without a lanyard hole
- Cinch design allows user to quickly secure equipment
- Two Stabilization wings can be used to secure cinch in place using our Tool Tape
- Coated alloy steel V-Ring attachment point
- Length 21.6" (54 cm)
- Max capacity 80 lbs (36.2 Kg)
- Meets ANSI/ISEA 121-2018 Standard



ELASTIC TOOL ATTACHMENT WITH SWIVEL D-RING

DXDP710140

- Shock absorbing design to gradually slow dropped tool
- Elastic Cord Cinch with adjustable barrel lock for tool attachment
- Coated steel alloy D-ring with swivel connection, for secure attachment
- Relaxed length 11" (27 cm); extended length 15" (38 cm)
- Max working capacity 15 lbs (6.8Kg)
- Meets ANSI/ISEA 121-2018 Standard
- Comes in a pack of 3



ATTACHMENT PRODUCTS FOR EVERY NEED



TOOL ATTACHMENT WITH SWIVELING D-RING

- Used to create a secure attachment point on most tools without an existing attachment point.
- Secure in place with our tool Tether Tape
- High strength polyester webbing
- Steel alloy D-Ring with swivel connection, for secure attachment
- Max working capacity 3 bs (1.3 Kg)
- Meets ANSI/ISEA 121-2018 Standard



DXDP710455 Length is 8.5" (16.5 cm.) 3-Pack

DXDP710444 Length is 6.5" (16.5 cm.) 3-Pack

DXDP710433 Length is 5.5" (14 cm.) 6-Pack

DXDP710422 Length is 4.5" (11 cm.) 6-Pack

DXDP710411 Length is 2.5" (6 cm.) 6-Pack

CINCH LOOP ATTACHMENT

DXDP710600

- Designed to safely tether small tools through captive tool hole
- Durable and reusable polyester cord
- Coated alloy steel D-ring for secure attachment
- Length is 6.6" (16 cm.)
- Max working capacity 5lbs (2.3 Kg)
- Meets ANSI/ISEA 121-2018 Standard
- Comes in a pack of 3



WIRE TOOL ATTACHMENT (3LBS)

DXDP710710

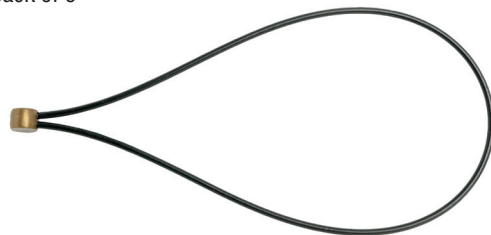
- Corrosion resistant to withstand weathering
- PU coating over cable wire for protection and durability
- Screws easily connect to create a one-step attachment point
- Designed to safely tether small tools through captive tool hole
- Max capacity of 3 lbs (1.3 kg)
- Full length 6" (15 cm)
- Meets ANSI/ISEA 121-2018 Standard
- Comes in a pack of 6



WIRE TOOL ATTACHMENT (2LBS)

DXDP710700

- Corrosion resistant to withstand weathering
- PU coating over cable wire for protection and durability
- Designed to safely tether small tools through captive tool hole
- Max capacity of 2 lbs (0.9kg)
- Full length 6" (15 cm)
- Meets ANSI/ISEA 121-2018 Standard
- Comes in a pack of 6



TOOL TAPE

DXDP810100

- Used to creates instant points for tethering
- No heating required for application
- Self-Adhering means no adhesives required
- Roll contains 12' (3.6 m) allowing for attachments on multiple tools
- Meets ANSI/ISEA 121-2018 Standard
- Comes in pack of 1





TOOL LANYARDS

It is vital to ensure safety on the jobsite. DEWALT Tool Lanyards give peace of mind that all your tools are secured and will protect anyone below you.

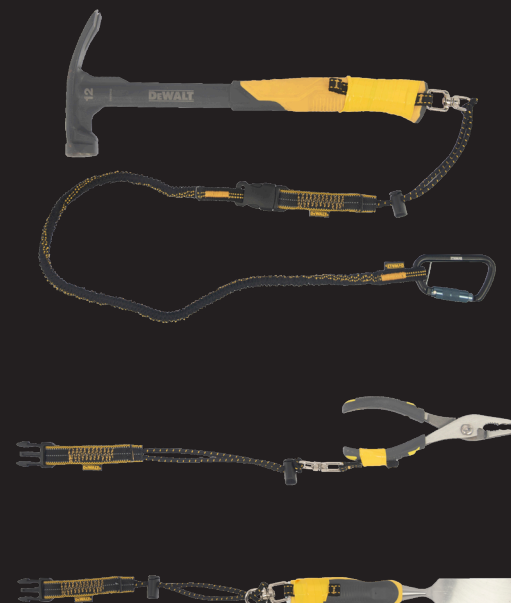
Tool lanyards are the connection between the tool and the anchor point that prevents the tool from falling to the next level.

They come in capacities from 2 lbs. for small items like mobile phones and up to 80 lbs. for heavy tools. Most commonly they are 5 lbs. for small hand tools and 15 to 25 lbs. for larger hand tools and power tools.

They can be a bungee style, a coiled length of PU coated wire or straight fabric.

They use aluminum or steel carabiners with double acting gates to connect to the tool attachment that is selected for the tool. The anchor end can be a cinch loop or a second carabiner.

QUICK CONNECT FOR EASY TOOL CHANGE



QUICK CONNECT TOOL LANYARD

DXDP710501

- Durable polyester blended webbing
- Anodized aluminum alloy carabiner with captive eye
- Modular connection for quick exchange of tools
- Relaxed length 37" (93 cm); extended length 51" (129 cm)
- Max working capacity 5lbs (2.3 Kg)
- Meets ANSI/ISEA 121-2018 Standard



QUICK CONNECT TOOL ATTACHMENT

DXDP710211

- Shock absorbing design to gradually slow dropped tool
- Elastic Cord Cinch with adjustable barrel lock for tool attachment
- Quick connection point for easy tethering and for secure attachment
- Relaxed length 11" (27 cm); extended length 15" (38 cm)
- Max working capacity 5 lbs (2.3Kg)
- Meets ANSI/ISEA 121-2018 Standard
- Comes in a pack of 3



ELASTIC TOOL ATTACHMENT

DXDP710500

- Durable polyester blended webbing
- Anodized aluminum alloy carabiner with captive eye
- Modular connecting buckle for quick exchange of tools exchanging tools
- Relaxed length 28" (71 cm); extended length 43" (109 cm)
- Max working capacity 5lbs (2.3 Kg)
- Meets ANSI/ISEA 121-2018 Standard



COILED TOOL LANYARD

DXDP710900

- PU coated steel cable for corrosion resistance and durability
- Stainless steel carabiners for quick connection
- Swiveling design prevents tangles and fast recoil
- Coiled length 4" (10 cm); extended length 60" (152 cm)
- Max working capacity: 2lbs (0.9kg)
- Meets ANSI/ISEA 121-2018 Standard



CLIP TO LOOP SPRING LANYARD

DXDP711100

- Lightweight polyurethane cable for tethering lightweight tools and objects such as mobile phones
- Coiled length 12" (30 cm); extended length 36" (91 cm)
- Max working capacity: 2lbs (0.91kg)
- Meets ANSI/ISEA 121-2018 Standard
- Comes in a pack of 3



HARD HAT LANYARD

DXDP610400

- High-stretch elastic polyester material
- Double lock buckle attaches to harness or vest
- Tethering loop to connect to slots on hard hat
- Relaxed length 16" (40 cm); extended length 34" (86 cm)
- Maximum safe working capacity: 2lbs / 0.9kg
- Meets ANSI/ISEA 121-2018 Standard



TESTED TOUGH EASY TO USE

All DEWALT lanyards are made from high quality materials to ensure strength, longevity and reliability. Rugged polyester webbing, polyurethane coated cable, heavy duty steel and aluminum connectors are just some of the materials used. All Lanyards are tested and meet ANSI/ISEA 121-2018 standards

WRISTBAND TOOL LANYARD

DXDP610310

- Durable polyester webbing secures to wrist
- Built-in tool lanyard provides quick connection with tool attachment points
- Elastic webbing helps reduce the forces on the wrist in the event of a drop
- Wrist Measurement: S/M 5in (12 cm) – 7in (17 cm)
- Relaxed length 13.75" (35 cm); extended length 16.5" (41 cm)
- Maximum safe working capacity: 2 lbs (0.9 kg)
- Meets ANSI/ISEA 121-2018 Standard standard



SINGLE LEG TOOL LANYARD

DXDP720200

- Durable polyester blended webbing
- Elastic Cord Cinch with adjustable barrel lock for tool attachment
- Anodized aluminum alloy carabiner with captive eye
- Relaxed length 32" (81 cm); extended length 51" (129 cm)
- Max working capacity 15 lbs (6.8Kg)
- Meets ANSI/ISEA 121-2018 Standard



TWIN LEG TOOL LANYARD

DXDP720220

- Twin legged design for use with two tools up to 15 pounds per lanyard leg
- Durable polyester blended webbing
- Elastic Cord Cinch with adjustable barrel lock for tool attachment
- Anodized aluminum alloy carabiner with captive eye
- Relaxed length 32" (81 cm); extended length 51" (129 cm)
- Max working capacity 15 lbs (6.8Kg)
- Meets ANSI/ISEA 121-2018 Standard



SINGLE LEG LANYARD WITH LOOP

DXDP720300

- Durable polyester blended webbing
- Treaded loop end that grips the tool when attached
- Anodized aluminum alloy carabiner with captive eye
- Relaxed length 24.4" (60 cm); extended length 43.3" (109 cm)
- Max working capacity 25 lbs (11.3 Kg)
- Meets ANSI/ISEA 121-2018 Standard



TWIN LEG LANYARD WITH LOOP

DXDP720310

- Durable polyester blended webbing
- Treaded loop ends that grips the tool when attached
- Anodized aluminum alloy carabiner with captive eye on both ends
- Relaxed length 24.4" (60 cm); extended length 43.3" (109 cm)
- Max working capacity 25 lbs (11.3 Kg)
- Meets ANSI/ISEA 121-2018 Standard



SINGLE LEG LANYARD (MEDIUM DUTY)

DXDP720500

- Durable polyester blended webbing
- Treaded loop end that grips the tool when attached
- Swiveling aluminum alloy carabiner with captive eye
- Relaxed length 39" (99 cm); extended length 67" (170 cm)
- Max working capacity 35 lbs (15.8 Kg)
- Meets ANSI/ISEA 121-2018 Standard



SINGLE LEG LANYARD (HEAVY DUTY)

DXDP720510

- Durable polyester blended webbing
- Treaded loop end that grips the tool when attached
- Swiveling aluminum alloy carabiner with captive eye and swivel
- Relaxed length 70" (177 cm)
- Max working capacity 80 lbs (36.2 Kg)
- Meets ANSI/ISEA 121-2018 Standard





POWER TOOL LANYARDS

The DEWALT Power Tool Lanyards are designed to be used with tools that have a secure, lanyard-ready attachment point in place. The lanyards are made with polyester webbing and aluminum components to provide durability and longevity even in the toughest work environments. The swiveling, double locking carabiners along with the elastic design combine

to provide freedom of movement and tangle free operation during use. All of our lanyards are tested and meet ANSI/ISEA 121-2018 Standard.

Please check out <https://www.dewalt.com/jobsite-solutions/perform-and-protect/control> to learn about DEWALT's exciting new lanyard ready tool programs.

POWER TOOL LANYARD

DXDP721500

- Durable polyester blended webbing
- Dual anodized aluminum carabiners with captive eye & swivel – both ends
- Relaxed length 24" (61 cm); extended length 38" (96 cm)
- Max working capacity 15 lbs (6.8 Kg)
- Meets ANSI/ISEA 121-2018 Standard



POWER TOOL LANYARD

DXDP721501

- Durable polyester blended webbing
- Dual anodized aluminum carabiners with captive eye & swivel – both ends
- Relaxed length 24" (61 cm); extended length 38" (96 cm)
- Max working capacity 25 lbs (11.3 Kg)
- Meets ANSI/ISEA 121-2018 Standard



POWER TOOL LANYARD

DXDP721510

- Durable polyester blended webbing
- Dual anodized aluminum carabiners with captive eye & swivel – both ends
- Relaxed length 41" (104 cm); extended length 75" (190 cm)
- Max working capacity 15 lbs (6.8 Kg)
- Meets ANSI/ISEA 121-2018 Standard



POWER TOOL LANYARD

DXDP721511

- Durable polyester blended webbing
- Dual anodized aluminum carabiners with captive eye & swivel – both ends
- Relaxed length 41" (104 cm); extended length 75" (190 cm)
- Max working capacity 25 lbs (11.3 Kg)
- Meets ANSI/ISEA 121-2018 Standard





ANCHORS & HOLDERS

Anchors and holders are a way to connect tools that already have an attachment and lanyard secured in place.

Any tool weighing 5 or less pounds can be attached to the person. Options for attachment include wristbands, holders, and attachment points on a tool belt or harness designed specifically for the attachment of tool lanyards.

For tools weighing more than 5 pounds the lanyard can be attached to an anchor point such as a guard-rail, beam or other secure structure that is in close working proximity.

Anchor straps can also be connected to the points mentioned above and then multiple tools can be connected to one d-ring as long as the total weight does not exceed the anchor strap's working capacity.

ANCHOR STRAP (50LBS)

DXDP813002

- Abrasion resistant sleeve for improved life
- The D-ring provides capacity for multiple tool connections depending on weight allows for easy connection to beams and rails
- Length 24" (60 cm)
- Max capacity 50 lbs (22.6 kg)
- Meets ANSI/ISEA 121-2018 Standard



ANCHOR STRAP (80LBS)

DXDP813012

- Abrasion resistant sleeve for improved life
- The D-ring provides capacity for multiple tool connections depending on weight allows for easy connection to beams and rails
- Length 24" (60 cm)
- Max capacity 80 lbs (36.3 kg)
- Meets ANSI/ISEA 121-2018 Standard



WRISTBAND TOOL ANCHOR

DXDP610300

- Durable polyester material for long wear
- Pull-on design is easy to take on and off
- Adjusts to any wrist size - One size fits all
- Coated alloy steel D-ring attachment point for tethering lightweight hand tools
- Maximum safe working capacity: 2 lbs (0.9 kg)
- Meets ANSI/ISEA 121-2018 Standard



TAPE MEASURE HOLDER

DXDP610200

- Hook and loop straps secure tape measure inside holder for safe and easy tethering
- Accommodates tape measures up to 35 feet (10.5 meters)
- Rugged polyester nylon body
- Coated alloy steel D-Ring for connecting to tool lanyards
- Steel belt clip securely attaches to a tool belt
- Maximum safe working capacity of 2 lbs (0.9 kg)
- Meets ANSI/ISEA 121-2018 Standard



MOBILE PHONE HOLDER

DXDP610100

- Rugged polyester body stretches to fit most mobile phones
- Heavy-duty elastic hook & loop straps protect for greater protection
- Coated alloy steel D-Ring on back for connecting to tool lanyards
- Max working capacity 2 lbs (0.9 kg)
- Meets ANSI/ISEA 121-2018 Standard



MOBILE PHONE HOLDER KIT

DXDP910600

- Rugged polyester body stretches to fit most mobile phones
- Heavy-duty elastic hook & loop straps protect for greater protection
- Coated alloy steel D-Ring on back for connecting to tool lanyards
- Holder includes lanyard and phone connector for complete drop prevention system
- Max working capacity 2 lbs (0.9 kg)
- Meets ANSI/ISEA 121-2018 Standard



TOOL TETHERING KITS

The DEWALT tool tethering kits are ideal for small tools of 5 pounds or less. You get all of the components needed to create a complete tethering system, designed to keep tools close by and free from drops that can cause injury or property damage.

QUICK CONNECT TOOL TETHERING KIT

DXDP910100

Tether up to four 5lbs (2.3 kg) tools

Kit Includes:

- Detachable Loops 3-Pack , with modular quick snap buckle
- Self-Adhering Tool Tape - 12ft (3.7 m) Roll, requires no heat to apply
- Detachable Single Carabiner Tool Lanyard – 5lbs (2.3 kg) max capacity, with modular connecting and anodized aluminum carabiner
- Durable polyester blended webbing, having a relaxed length 37" (93 cm); extended length 51" (129 cm)
- Meets ANSI/ISEA 121-2018 Standard



COILED TOOL TETHERING KIT

DXDP910150

Tether up to four 2lbs (0.9 kg) tools

Kit Includes

- Three 2.5" (6 cm) high strength Polyester tool attachments with coated steel alloy Swivel D-Ring for secure attachment with 3 lbs (1.3 kg) max capacity
- Self-Adhering Tool Tape - 12ft (3.7 m) Roll, requires no heat to apply
- Coiled tool lanyard with coated stainless-steel carabiners for quick connection
- Swiveling design prevents tangles and fast recoil
- Coiled length 4" (10 cm); extended length 60" (152 cm)
- Max working capacity: 2lbs (0.9 kg)
- Meets ANSI/ISEA 121-2018 Standard



COILED TAPE MEASURING KIT

DXDP910200

For secure attachment of tape measures

Kit Includes

- Tape measure boot with hook and loop straps secure tape measure inside holder for safe and easy tethering
- Coated Steel alloy D-Ring for connecting to tool lanyards
- Coiled tool tether with coated Stainless-Steel carabiners for quick connection
- Swiveling design prevents tangles and fast recoil
- Coiled length 4" (10 cm); extended length 60" (152 cm)
- Max working capacity: 2lbs (0.9 kg)
- Meets ANSI/ISEA 121-2018 Standard



QUICK CONNECT TAPE MEASURING KIT

DXDP910300

For secure attachment of tape measures

Kit Includes

- Tape measure boot with hook and loop straps secure tape measure inside holdert for safe and easy tethering
- Coated steel alloy D-Ring for connecting to tool lanyards
- Detachable single carabiner Tool Lanyard – 5lbs (2.3kg) max capacity, with modular connecting buckle and anodized aluminum carabiner.
- Durable polyester blended webbing, having a relaxed length 37" (93 cm); extended length 51" (129 cm)
- Max working capacity: 2 lbs (0.9 kg)
- Meets ANSI/ISEA 121-2018 Standard



FALLING OBJECTS DATA

Industry data tells us that dropped objects are a major cause of property damage, workplace injuries and even fatalities. Understanding the need to implement a dropped object prevention program helps to mitigate all these hazards and helps to ensure a safer working environment.





Manufactured and Distributed by:

Trademark Licensee: DFP Safety Corp. 20711 Holt Av. Suite 1525 Lakeville, MN 55044

1-800- 391-1862

A licensee of DEWALT Industrial Tool Co.

www.DFPSAFETY.com

P/N: DL101001, Rev: E, Date: 13 December 2022



© 2022 DEWALT. DEWALT® is a registered trademark of the DEWALT Industrial Tool Co., used under license. All rights reserved. The yellow and black color scheme is a trademark for DEWALT Power Tools and Accessories.

All rights reserved. Neither this catalogue nor its text, illustrations, drawings or any part thereof, may be reproduced, stored in a retrieval system, photocopied, recorded or transmitted in any form, whether electronic or otherwise, without our consent. To the best of our knowledge, all descriptions and illustrations contained in, this catalogue are correct at the time of going to print. We cannot, however, be held liable for any inaccuracies of description or illustration and reserve the right to change specifications without notification. © DEWALT® 2022.